



## TAKFLY COMMUNICATIONS CO., LTD.

Established in 2000, Takfly Communications Co., Ltd., as one of TAKFLY Group members, which is a high-tech enterprise incorporating R&D production and sales of WDM/CWDM/DWDM, MPO/MTP, fiber optic passive components, which include fiber optic patch cord, connector, adapter, coupler, attenuator, splice closure, terminal box, ODF, etc.

With the development of the business, TAKFLY Group has expanded its business to fiber active components and opens a subsidiary which is named Takfly Industrial Co., Ltd. in 2004. Main products of active components are HDMI, SDI, VDI, CVI, TVI, AHD, Video fiber transmission, video optical transmitter/receiver, optical transceiver series, Media converter, SFP, XFP, SFP+, QSFP, CFP2 Module, etc.

At present, TAKFLY Group covers an area of 6500 square meters and with more than 250 workers, and the capacity of patchcords are 2,000,000PCS/month. All these fiber optic passive and active components are widely used in telecommunications, broadband, broadcast, security monitoring and network industry.

All of our products have been approved by CE, RoHS, REACH and FCC, and TAKFLY Group meets the standard of ISO9001.

Based on the concepts of "High Quality, Reasonable Price, Excellent Service and Mutual Benefit", TAKFLY is becoming a famous brand all over the world.

Warmly welcome to be our business partner, and let us help you to win the markets !



### *Customers spread all over the world*





TAKFLY COMMUNICATIONS CO. , LTD.

### MPO/MTP Series



### MTO/MPO QSFP 40G AOC AND CXP Series





TAKFLY COMMUNICATIONS

## Connector Series



TAKFLY COMMUNICATIONS

## Fiber Optic Adaptor



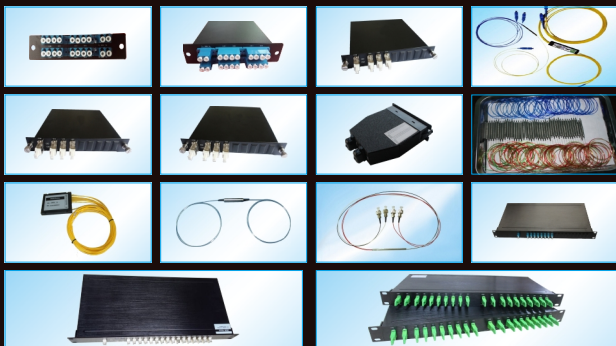
## Attenuator Series





TAKFLY COMMUNICATIONS CO., LTD.

CWDM / DWDM / FWDM Series



PLC Series



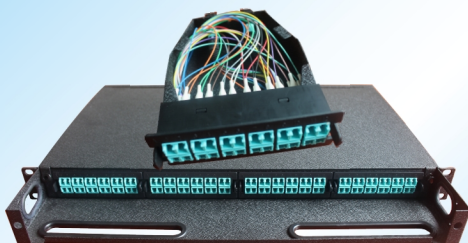
Coupler



TAKFLY COMMUNICATIONS CO. , LTD.



TAKFLY COMMUNICATIONS CO. , LTD.





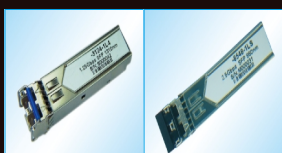
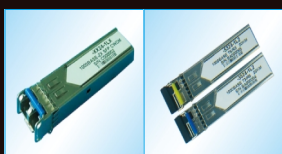
TAKFLY INDUSTRIAL

## Certificate



TAKFLY INDUSTRIAL

## SFP module





TAKFLY INDUSTRIAL CO., LTD.

*Optical fiber transmission equipments*

